

Article

Comprehensive Analysis of Seasonal and Geographical Variation in UVB Radiation Relevant for Vitamin D Production in Europe

Tarinee Khanna ^{1,†}, Rasha Shraim ^{1,2,†}, Masa Zarkovic ^{1,3}, Michiel van Weele ⁴, Jos van Geffen ⁴ and Lina Zgaga ^{1,*}

¹ Department of Public Health and Primary Care, Institute of Population Health, Trinity College Dublin, D24 DH74 Dublin, Ireland

² The SFI Centre for Research Training in Genomics Data Sciences, University of Galway, H91 TK33 Galway, Ireland

³ Institute of Social and Preventive Medicine, University of Bern, 3012 Bern, Switzerland

⁴ Royal Netherlands Meteorological Institute, 3731 GA De Bilt, The Netherlands

* Correspondence: zgagal@tcd.ie

† These authors contributed equally to this work.

Abstract: Dermal synthesis, following sun exposure, is the main source of vitamin D. This study characterizes ambient UVB radiation relevant for vitamin D production in Europe. A biological weighing function was applied to data from the Tropospheric Emissions Monitoring Internet Service (TEMIS) for 46 capital cities over an 18-year period (2004–2021) to isolate wavelengths relevant for vitamin D production (D-UVB). Cumulative and weighted D-UVB (CW-D-UVB) were calculated to approximate seasonal vitamin D accumulation and diminution. Monthly 25(OH)D concentration measurements were extracted from published reports. All data were analyzed by location and time. Despite a moderate latitudinal range (35–64° N), we observed large—up to five-fold—regional differences: the highest mean diurnal D-UVB dose of 5.57 kJ/m² (SD = 3.55 kJ/m²) was observed in Nicosia (Cyprus) and the lowest in Reykjavik (Iceland, 1.16 ± 1.29 kJ/m²). Seasonal differences in diurnal D-UVB dose were even more pronounced, with a median 36-fold difference between annual peak and trough depending on a location (range: 10- to 525-fold). The mean duration of “vitamin D winter” was 126 days but varied widely (4 to 215 days). Monthly CW-D-UVB and 25(OH)D changes were very strongly correlated: the changes in 25(OH)D concentration increased by 12.6 nmol/L for every 100 kJ/m² increment of CW-D-UVB in population-based studies ($r^2 = 0.79$, p -value = 1.16×10^{-37}). Understanding the differences in D-UVB radiation can help understand determinants of vitamin D status and guide region- and season-specific safe and effective sunlight exposure recommendations and vitamin D supplementation guidelines.

Keywords: ultraviolet B (UVB) radiation; Europe; vitamin D; public health; vitamin D supplementation; sun exposure



Citation: Khanna, T.; Shraim, R.; Zarkovic, M.; van Weele, M.; van Geffen, J.; Zgaga, L. Comprehensive Analysis of Seasonal and Geographical Variation in UVB Radiation Relevant for Vitamin D Production in Europe. *Nutrients* **2022**, *14*, 5189. <https://doi.org/10.3390/nu14235189>

Academic Editor: Bruce W. Hollis

Received: 2 November 2022

Accepted: 2 December 2022

Published: 6 December 2022

Publisher's Note: MDPI stays neutral with regard to jurisdictional claims in published maps and institutional affiliations.



Copyright: © 2022 by the authors. Licensee MDPI, Basel, Switzerland. This article is an open access article distributed under the terms and conditions of the Creative Commons Attribution (CC BY) license (<https://creativecommons.org/licenses/by/4.0/>).

1. Introduction

A substantial body of evidence suggests that vitamin D is essential for maintaining health, and deficiency has been linked with numerous acute and chronic diseases [1]. However, vitamin D deficiency remains common worldwide. In Europe, 40% of the population were found to be deficient (25-hydroxyvitamin D [25(OH)D] < 50 nmol/L) and 13% severely deficient (25(OH)D < 30 nmol/L) [2].

Dermal synthesis following exposure to sunlight has long been recognized as the primary source of vitamin D for most people. In a photochemical reaction, the UVB component of solar radiation has the potential to convert 7-dehydrocholesterol (7-DHC) in the skin into pre-vitamin D₃. Subsequently, pre-vitamin D₃ isomerizes spontaneously into vitamin

D₃ [3]. It is estimated that as much as 90–100% of the daily requirements can be attained by UVB-induced vitamin D synthesis in the skin—even at European and North American latitudes [4,5]. Notwithstanding the fact that level of vitamin D synthesis is modified by numerous personal characteristics and behaviors that affect exposure and effectiveness of the downstream synthesis, the availability of ambient UVB is the root determinant of dermal vitamin D production [6–9]. This is best evidenced by the omnipresent seasonal co-fluctuation of vitamin D status and UVB in virtually every population, despite different personal characteristics, lifestyles, or built environment [2]. Similarly, numerous studies have consistently found an inverse association between vitamin D status and geographical location [10–12]: at higher latitudes, the UVB component of solar radiation is disproportionately more depleted when passing through the ozone layer. Consequently, the further an individual resides from the equator, the higher their risk of deficiency.

Understanding the ambient UVB dose—and thus the background dermal vitamin D production—at various locations and seasons, is key to formulating designer guidelines aimed at eradicating vitamin D deficiency, via oral vitamin D supplementation, food fortification or artificial light supplementation [13]. Moreover, as the broader benefits of sunshine for human health are being recognized, detailed understanding of solar radiation is critical for developing tailored sun exposure recommendations, with a view of maximizing benefit and minimizing harm. Unfortunately, despite being an easily accessible, key determinant of vitamin D status, precise measures of ambient UVB are rarely taken into account in epidemiological and clinical studies or considered in public health documents.

In this paper, we provide a detailed characterization of UVB dose relevant for vitamin D status in Europe. We describe regional and temporal trends, and provide data that can easily be adopted and used in future studies.

2. Methods

The list of 46 capital cities on the European continent was compiled. The latitude and longitude for each capital were established (Table S1).

2.1. UVB Data and Derived Variables

2.1.1. UVB Data

UV radiation data were extracted from the Tropospheric Emissions Monitoring Internet Service (TEMIS) database (www.temis.nl/uvradiation/UVdose.html) (accessed on 17 October 2022); version 2.0) [14] for selected locations (2004–2021). This database has been used previously and is described in detail elsewhere [7,8]. Using satellite-based ozone measurements, UV radiation at the earth's surface was computed every 5 min from sunrise to sunset and integrated over time to find the diurnal dose. Estimates were adjusted for numerous other variables, including surface elevation and surface UV reflectivity (UV albedo). Importantly, cloud cover attenuation was derived every 15 min from geostationary Meteosat Second Generation (MSG) satellite observations. Cloud cover was not available for some days (“blackout days”). In this case, the direct measurement was substituted with the mean diurnal UVB calculated for that day at that location, from available data (2004–2021). MSG observations were not available when the solar zenith angle (SZA) was more than 78° and therefore winter UVB dose could not be adjusted for cloud cover for some northern regions (Denmark, Norway, Estonia, Sweden, Latvia, Lithuania, Finland, Iceland, and Russia). In this case, mean cloud cover attenuation was approximated by a factor of 0.7 to adjust the UVB dose. Winter cloud data were missing from 10 days for Vilnius up to 105 days for Reykjavik around the winter solstice, when UVB dose is extremely low in those northerly regions and thus its impact on the UVB approximations is minimal. Data were available with a resolution of 0.25° longitude by 0.25° latitude. We only use the adjusted UVB provided by TEMIS as described above.

2.1.2. Vitamin D-Specific UVB (D-UVB)

D-UVB dose was calculated by weighing UVB radiation dose at wavelengths that can induce cutaneous vitamin D production (290–315 nm) with the appropriate sensitivity function (peak synthesis occurs at 295–298 nm) [14–16].

2.1.3. Vitamin D Winter

To calculate the duration of “vitamin D winter”, we assumed D-UVB dose of 1 kJ/m² is the threshold below which vitamin D synthesis was negligible [11].

2.1.4. Mean Diurnal Dose

Mean Diurnal Dose is calculated for each of the 365 days in a year (leap days were omitted). First, for any given day (e.g., 17th of June) available data were extracted from the TEMIS database, yielding 18 observations in most cases and mean D-UVB was calculated for that day, for each location of interest. Using these diurnal values, we calculated the *mean diurnal dose per month* and *annual mean diurnal D-UVB dose* for each location. Data averaged over the 18-year period is shown in this paper, except where we show temporal trends.

2.1.5. Cumulative and Weighted D-UVB (CW-D-UVB) Dose

We calculated CW-D-UVB dose, to approximate the impact of seasonal and geographical differences on vitamin D level. More detail on the method can be found elsewhere [7–9]. Briefly, we extracted diurnal D-UVB dose over 135 days preceding the date of interest at a given location. To account for the fact that recent D-UVB exposure contributes more to current vitamin D level than past exposure (due to vitamin D metabolism), we weighted the diurnal D-UVB contributions before summing them up. This calculation provided estimates of CW-D-UVB for each day of the year for each location we studied.

2.2. Analysis

Descriptive statistics were used. Mean and standard deviation of D-UVB and CW-D-UVB were calculated for each location. The differences between locations as well as seasonal fluctuations were evaluated. We selected Athens and Dublin as southerly and moderate northerly locations for which we show more detail.

2.3. Association between CW-D-UVB and Monthly 25(OH)D

25(OH)D and UVB

We searched the literature to find studies that report monthly 25(OH)D concentration. We found 15 studies [11,17–30] and extracted average monthly 25(OH)D concentration. We also calculated mean 25(OH)D for each month in the UK Biobank dataset (data not shown). Studies were classified as (A) healthy/population-based cohorts [11,17,20,21,23–26], (B) disease cohorts [18,19,22], or (C) laboratory samples/database [27–30], and analyzed separately. Based on the country the study was conducted in, we used average monthly CW-D-UVB data for the corresponding capital city from our file (except Faroe Islands where the mean between Oslo and Reykjavik was used). We calculated the difference in 25(OH)D and the difference in CW-D-UVB for each month relative to March (when 25(OH)D is typically the lowest), to somewhat account for the differences between the populations and focus on the change in 25(OH)D and CW-D-UVB instead. Finally, we assessed the relationship between the CW-D-UVB and the corresponding 25(OH)D concentration differences.

3. Results

Regional differences. D-UVB dose over the year is shown in Figure 1A for selected cities (remainder are shown in Figure S2). We note large day-to-day variations in the diurnal dose (Figure 1B and Figure S3). Unsurprisingly, regions at lower latitudes were generally associated with higher levels of D-UVB radiation (Table 1). The highest mean annual diurnal D-UVB dose of 5.57 kJ/m² (SD = 3.55 kJ/m²) was observed for Nicosia and the lowest for Reykjavik (1.16 kJ/m² ± 1.29 kJ/m²). This equates to a cumulative

annual D-UVB dose of 2033 kJ/m² in Nicosia and nearly five times less, 423 kJ/m², in Reykjavik. Variation in the duration of “vitamin D winter” was notable. This period lasted over 6 months in examined cities at latitudes above 59°, but only for about 2 months at latitudes below 40° (Figure 2). D-UVB dose also varied by longitude. Overall, radiation dose was higher in the east compared to the west. For example, Brussels (50.80° N, 4.36° E), Prague (50.08° N, 14.44° E), and Kiev (50.45° N, 30.52° E) are at a similar latitude, but radiation was highest in Kiev (mean diurnal dose: 2.72 ± 2.45 kJ/m²), the most eastern of the three, followed by Prague (2.64 ± 2.30 kJ/m²), then Brussels (2.43 ± 2.12 kJ/m²).

Seasonal differences. Notable seasonal differences were observed. The lowest levels of D-UVB radiation were observed in December and the highest in July, or June at some higher latitudes (Table 1, Figure 1A and Figure S2). Between annual peak and trough, a median 36-fold difference was observed (range: 10- to 525-fold). The relative difference between peak and trough month varied according to latitude: in Athens mean July dose was 13-fold that in December. However, the difference was more pronounced with increasing latitude: in Zagreb it was 30-fold higher, in London 50-fold higher, and in Oslo 205-fold higher.

CW-D-UVB

The findings relating to CW-D-UVB, a measure approximating vitamin D status in the population, largely mirrored these regional and seasonal patterns. The most notable difference is that CW-D-UVB dose peaks/troughs about one-to-two months later and is smoother (Figure 3). Daily data over the 10-year period (2010–2020, Athens and Dublin) are shown in Figure 4.

We observed a very strong correlation between monthly CW-D-UVB difference and monthly 25(OH)D difference (reference month: March) with data from population-based studies or cohorts of healthy individuals. For every 100 kJ/m² change in CW-D-UVB, change of 12.64 nmol/L in 25(OH)D concentration was observed (β -coeff = 0.126, $r^2 = 0.79$, p -value = 1.16×10^{-37} , Figure 5A). The correlation was weaker in cohorts of diseased individuals (β -coeff = 0.065, $r^2 = 0.33$, p -value = 0.00024, Figure 5B) and in laboratory datasets (β -coeff = 0.042, $r^2 = 0.38$, p -value = 9.23×10^{-9} , Figure 5C).

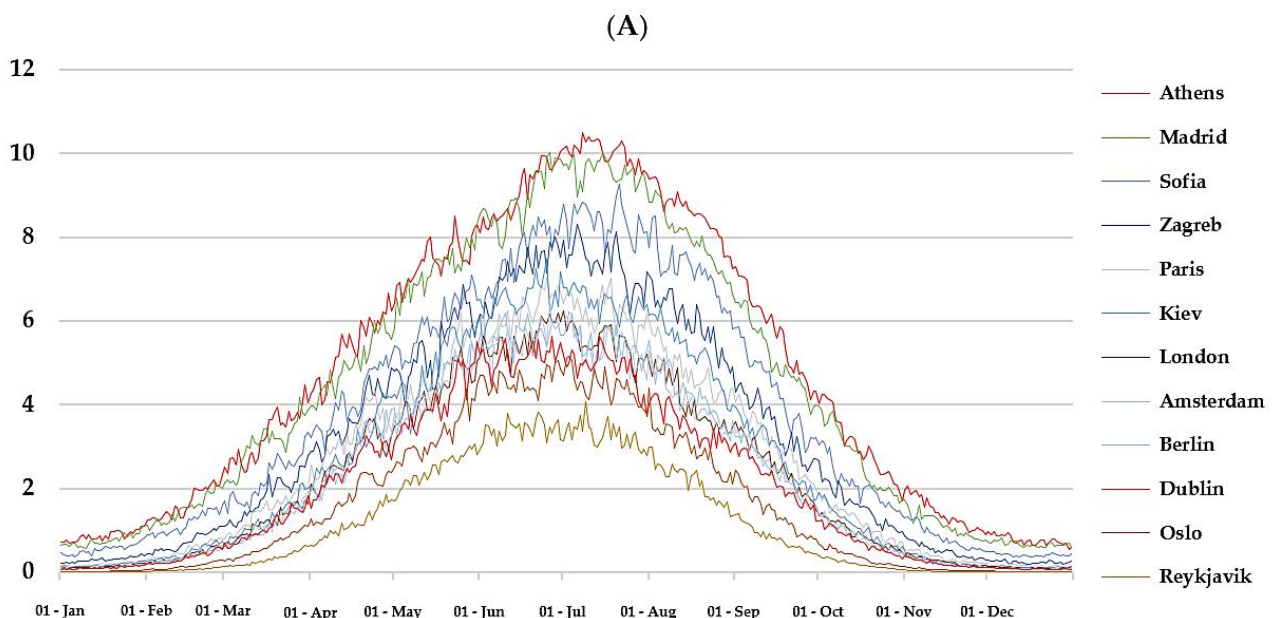


Figure 1. Cont.

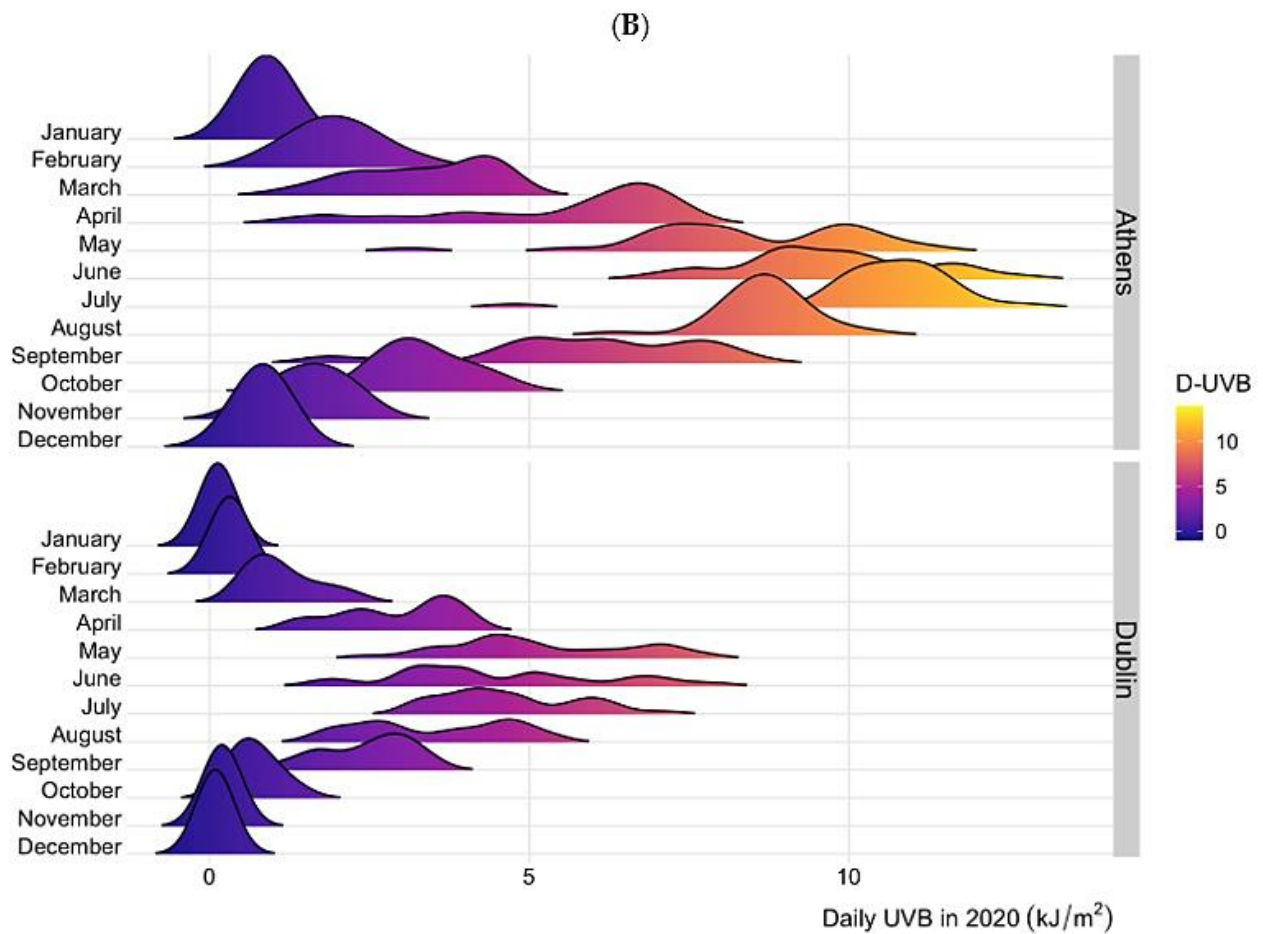


Figure 1. (A) Mean D-UVB dose for selected cities over the year. For any given day, data on UVB dose that can induce vitamin D synthesis (D-UVB) were extracted for the study period (2004–2021, thus yielding 18 observations in most cases) and mean D-UVB was calculated for that day of the year, for each location of interest. (B) Distribution of D-UVB dose by month for Dublin and Athens in 2020. **Footnote:** The data in panel B are plotted with the `geom_density_ridges` function (“ggridges” package), which estimate the density distribution from the provided D-UVB data and enables the visualization of changes in distributions over time. [citation: Claus O. Wilke (2021). `ggridges`: Ridgeline Plots in “ggplot2”. R package version 0.5.3. Available at <https://CRAN.R-project.org/package=ggridges> (accessed on 17 October 2022).

Table 1. Mean diurnal D-UVB dose [kJ/m²] and standard deviation (SD) for European capital cities annually and by month (2004–2021; sorted by increasing latitude).

	Annual	January	February	March	April	May	June	July	August	September	October	November	December
Nicosia	5.57 (3.55)	1.23 (0.16)	2.23 (0.42)	4.07 (0.56)	6.24 (0.81)	8.31 (0.81)	10.33 (0.57)	11.06 (0.27)	9.51 (0.63)	6.78 (0.90)	3.84 (0.79)	1.92 (0.37)	1.13 (0.12)
Valletta	5.02 (3.38)	1.03 (0.11)	1.88 (0.42)	3.52 (0.72)	5.68 (0.69)	7.96 (0.54)	9.45 (0.69)	10.35 (0.34)	8.78 (0.71)	5.75 (0.89)	3.17 (0.66)	1.51 (0.32)	0.92 (0.08)
Athens	4.78 (3.30)	0.87 (0.12)	1.65 (0.36)	3.24 (0.60)	5.36 (0.72)	7.44 (0.51)	9.08 (0.64)	10.02 (0.28)	8.55 (0.58)	5.70 (0.95)	3.01 (0.74)	1.40 (0.36)	0.77 (0.11)
Lisbon	4.51 (3.06)	0.89 (0.14)	1.70 (0.34)	3.28 (0.53)	5.07 (0.71)	7.21 (0.55)	8.64 (0.53)	9.19 (0.26)	7.86 (0.64)	5.27 (0.75)	2.81 (0.75)	1.26 (0.27)	0.78 (0.06)
Ankara	4.66 (3.45)	0.71 (0.12)	1.39 (0.27)	2.79 (0.58)	4.99 (0.75)	7.21 (0.72)	9.05 (0.72)	10.42 (0.33)	8.76 (0.68)	5.68 (0.98)	2.83 (0.73)	1.23 (0.32)	0.62 (0.08)
Madrid	4.48 (3.20)	0.76 (0.14)	1.51 (0.33)	3.07 (0.55)	4.96 (0.65)	7.18 (0.56)	8.92 (0.67)	9.57 (0.28)	7.94 (0.67)	5.16 (0.83)	2.69 (0.75)	1.12 (0.27)	0.67 (0.06)
Tirana	4.01 (3.06)	0.57 (0.10)	1.12 (0.27)	2.38 (0.61)	4.31 (0.67)	6.35 (0.71)	8.16 (0.75)	9.04 (0.44)	7.54 (0.66)	4.60 (0.87)	2.33 (0.51)	0.98 (0.29)	0.50 (0.05)
Rome	3.97 (3.01)	0.56 (0.09)	1.17 (0.27)	2.45 (0.61)	4.36 (0.54)	6.44 (0.68)	8.20 (0.70)	8.82 (0.38)	7.28 (0.68)	4.47 (0.76)	2.27 (0.52)	0.91 (0.24)	0.49 (0.04)
Skopje	3.84 (2.93)	0.57 (0.12)	1.22 (0.26)	2.24 (0.53)	4.12 (0.68)	6.07 (0.64)	7.81 (0.69)	8.61 (0.47)	7.27 (0.61)	4.41 (0.88)	2.21 (0.54)	0.90 (0.29)	0.44 (0.06)
Podgorica	3.90 (3.04)	0.50 (0.10)	1.01 (0.25)	2.26 (0.62)	4.31 (0.69)	6.31 (0.78)	8.14 (0.74)	8.79 (0.40)	7.35 (0.64)	4.45 (0.84)	2.19 (0.52)	0.86 (0.26)	0.43 (0.04)
AndorraVella	3.69 (2.94)	0.41 (0.04)	0.84 (0.24)	1.98 (0.51)	3.70 (0.59)	5.90 (0.67)	7.73 (0.88)	8.57 (0.38)	7.04 (0.65)	4.45 (0.75)	2.31 (0.62)	0.77 (0.25)	0.37 (0.03)
Pristina	3.81 (2.94)	0.49 (0.12)	1.18 (0.26)	2.26 (0.57)	4.21 (0.72)	6.12 (0.66)	7.87 (0.59)	8.53 (0.44)	7.19 (0.65)	4.33 (0.91)	2.11 (0.54)	0.83 (0.27)	0.38 (0.06)
Sofia	3.75 (2.86)	0.55 (0.11)	1.16 (0.25)	2.24 (0.53)	4.11 (0.67)	5.96 (0.61)	7.55 (0.68)	8.40 (0.40)	7.15 (0.62)	4.33 (0.90)	2.09 (0.51)	0.84 (0.28)	0.42 (0.04)
Monaco	3.79 (2.93)	0.49 (0.09)	1.05 (0.28)	2.33 (0.52)	4.23 (0.66)	6.32 (0.65)	8.03 (0.61)	8.42 (0.32)	6.90 (0.62)	4.26 (0.71)	2.08 (0.58)	0.79 (0.21)	0.41 (0.04)
Sarajevo	3.41 (2.68)	0.43 (0.10)	0.99 (0.25)	2.07 (0.57)	3.75 (0.62)	5.47 (0.62)	7.21 (0.75)	7.71 (0.56)	6.47 (0.66)	3.82 (0.85)	1.85 (0.48)	0.70 (0.23)	0.34 (0.04)
SanMarino	3.55 (2.85)	0.41 (0.06)	0.88 (0.24)	2.08 (0.57)	3.93 (0.58)	5.9 (0.76)	7.68 (0.72)	8.19 (0.45)	6.56 (0.62)	3.96 (0.75)	1.82 (0.46)	0.67 (0.21)	0.35 (0.04)
Bucharest	3.54 (2.82)	0.42 (0.08)	0.96 (0.23)	2.04 (0.50)	4.00 (0.71)	5.95 (0.64)	7.47 (0.57)	7.98 (0.32)	6.71 (0.68)	4.03 (0.84)	1.80 (0.50)	0.64 (0.22)	0.32 (0.03)
Belgrade	3.39 (2.72)	0.34 (0.08)	0.90 (0.25)	1.97 (0.54)	3.86 (0.72)	5.66 (0.71)	7.28 (0.65)	7.70 (0.50)	6.31 (0.64)	3.77 (0.84)	1.76 (0.49)	0.64 (0.21)	0.27 (0.04)
Zagreb	3.19 (2.64)	0.31 (0.06)	0.72 (0.22)	1.80 (0.50)	3.66 (0.65)	5.41 (0.75)	7.14 (0.57)	7.35 (0.51)	5.94 (0.65)	3.48 (0.67)	1.58 (0.46)	0.51 (0.16)	0.24 (0.03)
Ljubljana	3.11 (2.61)	0.29 (0.06)	0.69 (0.23)	1.74 (0.45)	3.53 (0.59)	5.24 (0.76)	6.99 (0.64)	7.30 (0.47)	5.81 (0.67)	3.42 (0.67)	1.48 (0.42)	0.47 (0.14)	0.23 (0.02)
Bern	3.11 (2.49)	0.34 (0.08)	0.83 (0.27)	1.94 (0.48)	3.64 (0.62)	5.22 (0.85)	6.87 (0.70)	6.97 (0.49)	5.49 (0.54)	3.53 (0.68)	1.54 (0.44)	0.51 (0.16)	0.27 (0.03)
Chisinau	3.16 (2.66)	0.30 (0.06)	0.72 (0.20)	1.69 (0.46)	3.48 (0.72)	5.47 (0.69)	7.06 (0.52)	7.30 (0.32)	6.05 (0.66)	3.49 (0.74)	1.48 (0.49)	0.45 (0.18)	0.21 (0.02)
Vaduz	3.04 (2.45)	0.30 (0.07)	0.77 (0.25)	1.81 (0.49)	3.59 (0.62)	5.13 (0.76)	6.76 (0.66)	6.76 (0.51)	5.41 (0.60)	3.47 (0.68)	1.55 (0.42)	0.51 (0.16)	0.25 (0.02)
Budapest	3.09 (2.59)	0.25 (0.06)	0.64 (0.20)	1.69 (0.47)	3.63 (0.68)	5.34 (0.68)	6.92 (0.49)	7.09 (0.49)	5.78 (0.59)	3.39 (0.68)	1.47 (0.46)	0.47 (0.19)	0.19 (0.03)
Bratislava	2.97 (2.53)	0.22 (0.06)	0.64 (0.22)	1.60 (0.44)	3.57 (0.70)	5.20 (0.67)	6.81 (0.41)	6.90 (0.43)	5.42 (0.63)	3.26 (0.64)	1.32 (0.44)	0.40 (0.15)	0.17 (0.02)
Vienna	2.91 (2.45)	0.25 (0.06)	0.67 (0.21)	1.58 (0.44)	3.53 (0.71)	5.04 (0.65)	6.59 (0.47)	6.72 (0.40)	5.30 (0.61)	3.18 (0.64)	1.29 (0.44)	0.39 (0.14)	0.17 (0.02)
Paris	2.70 (2.29)	0.20 (0.05)	0.53 (0.17)	1.47 (0.40)	3.26 (0.59)	4.83 (0.66)	6.21 (0.45)	6.21 (0.39)	4.80 (0.56)	3.06 (0.65)	1.20 (0.37)	0.35 (0.12)	0.16 (0.02)
Luxembourg	2.63 (2.28)	0.17 (0.04)	0.48 (0.17)	1.39 (0.41)	3.18 (0.62)	4.79 (0.68)	6.18 (0.43)	6.11 (0.42)	4.64 (0.55)	2.94 (0.64)	1.09 (0.33)	0.30 (0.10)	0.13 (0.01)
Prague	2.64 (2.30)	0.19 (0.06)	0.53 (0.18)	1.36 (0.41)	3.18 (0.70)	4.76 (0.68)	6.23 (0.38)	6.16 (0.39)	4.79 (0.59)	2.86 (0.61)	1.08 (0.36)	0.29 (0.10)	0.15 (0.02)
Kiev	2.72 (2.45)	0.18 (0.05)	0.47 (0.16)	1.29 (0.43)	3.02 (0.67)	4.94 (0.75)	6.53 (0.44)	6.47 (0.28)	5.24 (0.69)	2.85 (0.67)	1.08 (0.41)	0.27 (0.11)	0.13 (0.02)
Brussels	2.43 (2.12)	0.15 (0.04)	0.42 (0.14)	1.26 (0.39)	2.95 (0.60)	4.54 (0.62)	5.75 (0.43)	5.63 (0.40)	4.24 (0.54)	2.69 (0.58)	1.00 (0.31)	0.27 (0.10)	0.12 (0.02)
London	2.32 (2.05)	0.14 (0.04)	0.40 (0.14)	1.19 (0.33)	2.77 (0.54)	4.31 (0.54)	5.56 (0.38)	5.49 (0.39)	4.06 (0.60)	2.54 (0.59)	0.91 (0.29)	0.26 (0.09)	0.11 (0.02)
Warsaw	2.43 (2.21)	0.14 (0.04)	0.40 (0.13)	1.14 (0.39)	2.82 (0.61)	4.46 (0.67)	5.97 (0.35)	5.81 (0.34)	4.55 (0.60)	2.55 (0.57)	0.91 (0.33)	0.22 (0.09)	0.10 (0.01)
Amsterdam	2.29 (2.06)	0.12 (0.03)	0.36 (0.13)	1.16 (0.39)	2.79 (0.59)	4.41 (0.55)	5.56 (0.36)	5.37 (0.45)	4.05 (0.59)	2.43 (0.57)	0.86 (0.30)	0.22 (0.08)	0.09 (0.01)
Berlin	2.32 (2.11)	0.11 (0.04)	0.38 (0.15)	1.09 (0.35)	2.77 (0.67)	4.36 (0.67)	5.68 (0.29)	5.48 (0.35)	4.25 (0.58)	2.44 (0.59)	0.84 (0.30)	0.21 (0.08)	0.08 (0.01)

Table 1. Cont.

	Annual	January	February	March	April	May	June	July	August	September	October	November	December
Dublin	2.08 (1.88)	0.11 (0.03)	0.34 (0.13)	1.08 (0.35)	2.51 (0.48)	4.05 (0.65)	5.14 (0.28)	4.89 (0.42)	3.51 (0.44)	2.18 (0.51)	0.75 (0.27)	0.21 (0.08)	0.08 (0.01)
Minsk	2.28 (2.12)	0.10 (0.03)	0.36 (0.14)	1.14 (0.39)	2.59 (0.52)	4.28 (0.71)	5.68 (0.41)	5.54 (0.27)	4.30 (0.67)	2.24 (0.60)	0.72 (0.28)	0.16 (0.08)	0.07 (0.01)
Vilnius	2.16 (2.03)	0.09 (0.03)	0.31 (0.12)	1.04 (0.36)	2.46 (0.56)	4.12 (0.69)	5.44 (0.28)	5.27 (0.26)	4.04 (0.65)	2.12 (0.58)	0.66 (0.26)	0.14 (0.07)	0.06 (0.01)
Copenhagen	2.05 (1.97)	0.07 (0.02)	0.24 (0.10)	0.89 (0.33)	2.42 (0.57)	4.05 (0.57)	5.26 (0.22)	5.07 (0.39)	3.71 (0.63)	2.02 (0.57)	0.63 (0.25)	0.13 (0.05)	0.05 (0.00)
Moscow	2.10 (2.04)	0.08 (0.03)	0.29 (0.11)	0.91 (0.33)	2.25 (0.51)	4.13 (0.58)	5.40 (0.42)	5.28 (0.28)	4.08 (0.66)	1.90 (0.49)	0.58 (0.26)	0.12 (0.05)	0.06 (0.00)
Riga	1.98 (1.93)	0.06 (0.02)	0.25 (0.11)	0.90 (0.33)	2.21 (0.56)	3.86 (0.59)	5.12 (0.28)	5.04 (0.34)	3.66 (0.65)	1.82 (0.52)	0.53 (0.24)	0.10 (0.05)	0.04 (0.00)
Stockholm	1.76 (1.8)	0.03 (0.01)	0.15 (0.07)	0.66 (0.28)	1.93 (0.51)	3.49 (0.53)	4.77 (0.28)	4.69 (0.34)	3.20 (0.58)	1.54 (0.46)	0.40 (0.19)	0.07 (0.03)	0.02 (0.00)
Tallinn	1.76 (1.82)	0.04 (0.01)	0.15 (0.07)	0.66 (0.27)	1.90 (0.50)	3.59 (0.59)	4.79 (0.25)	4.71 (0.40)	3.26 (0.66)	1.48 (0.46)	0.39 (0.19)	0.07 (0.03)	0.02 (0.00)
Oslo	1.65 (1.7)	0.03 (0.01)	0.15 (0.07)	0.64 (0.27)	1.81 (0.46)	3.26 (0.55)	4.57 (0.25)	4.43 (0.35)	2.97 (0.53)	1.42 (0.49)	0.36 (0.17)	0.06 (0.03)	0.02 (0.00)
Helsinki	1.75 (1.84)	0.03 (0.01)	0.14 (0.07)	0.61 (0.27)	1.81 (0.48)	3.55 (0.57)	4.79 (0.30)	4.81 (0.40)	3.26 (0.71)	1.44 (0.46)	0.36 (0.18)	0.06 (0.03)	0.02 (0.00)
Reykjavik	1.16 (1.29)	0.01 (0.01)	0.06 (0.03)	0.32 (0.15)	1.15 (0.34)	2.46 (0.36)	3.41 (0.23)	3.28 (0.29)	2.15 (0.45)	0.82 (0.28)	0.20 (0.10)	0.03 (0.01)	0.01 (0.00)

First, for any given day, data on D-UVB dose were extracted for the study period (2004–2021, thus yielding 18 observations in most cases) and mean D-UVB was calculated for that day, for each location of interest. This reduced the number of datapoints to 365. Next, monthly and annual mean and SD were calculated using this data.

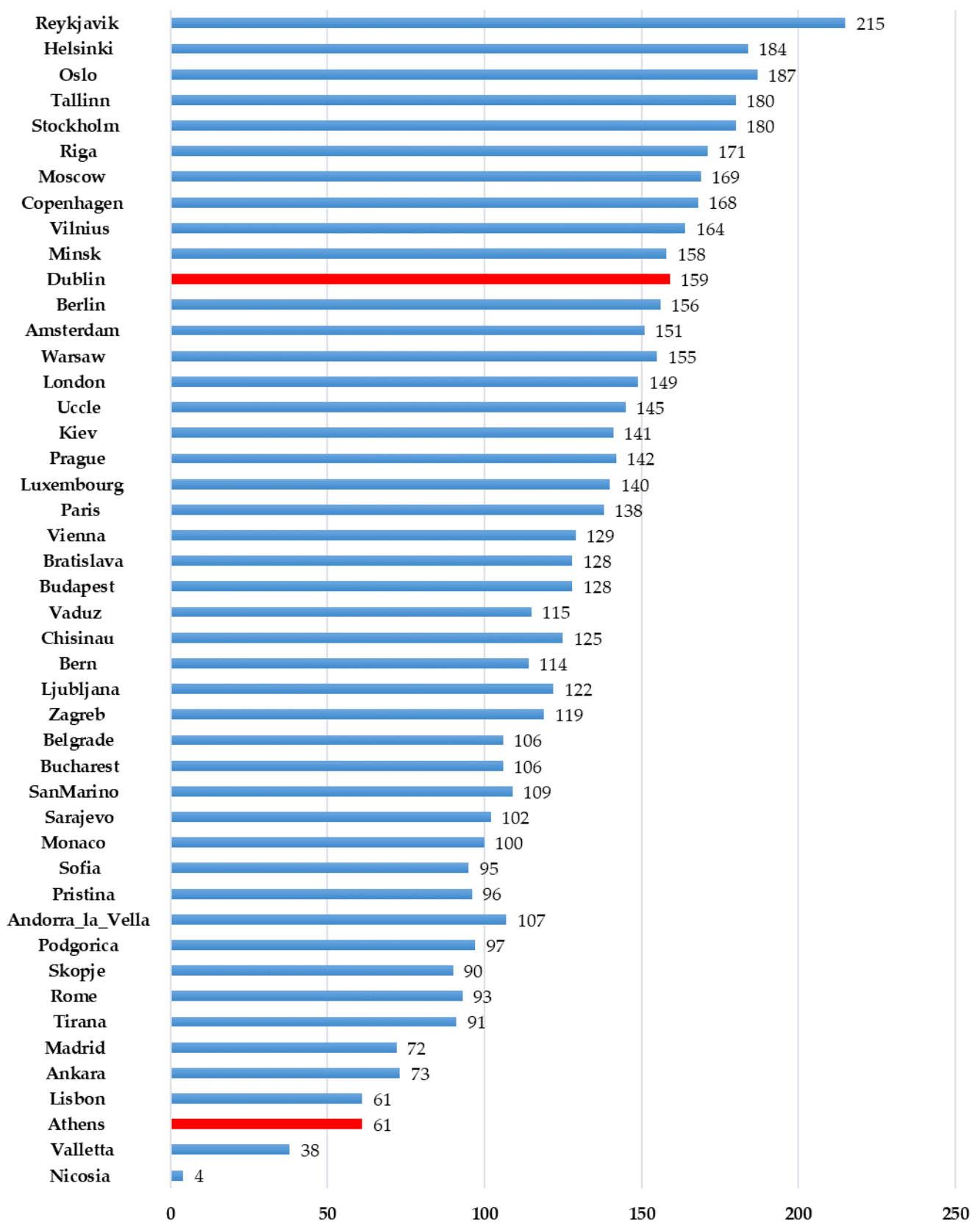


Figure 2. The duration of vitamin D winter in Europe. For any given day of the year, data on D-UVB dose were extracted for the study period (2004–2021, thus yielding 18 observations in most cases) and mean D-UVB was calculated for that day, for each location of interest. The number of days when average D-UVB dose is below 1 kJ/m^2 is shown.

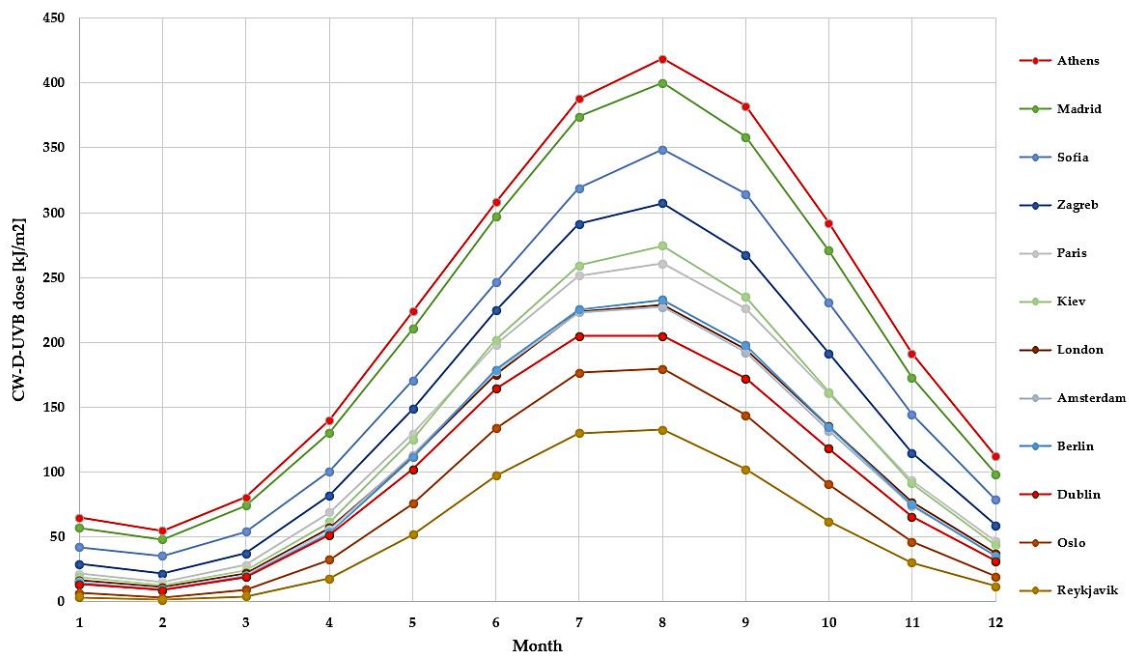


Figure 3. Mean monthly cumulative and weighted D-UVB (CW-D-UVB, a proxy of vitamin D status) for selected European capital cities.

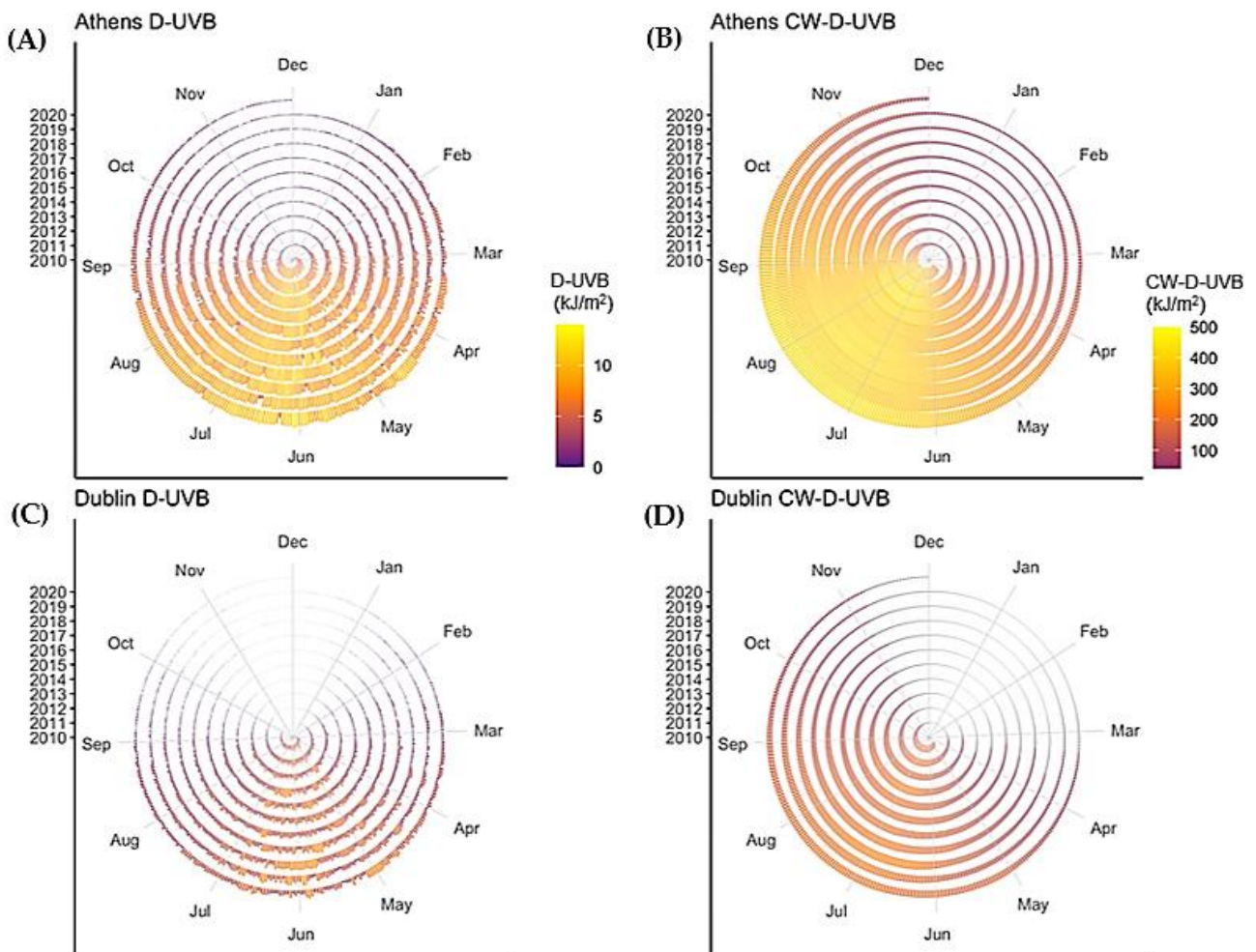


Figure 4. Cont.

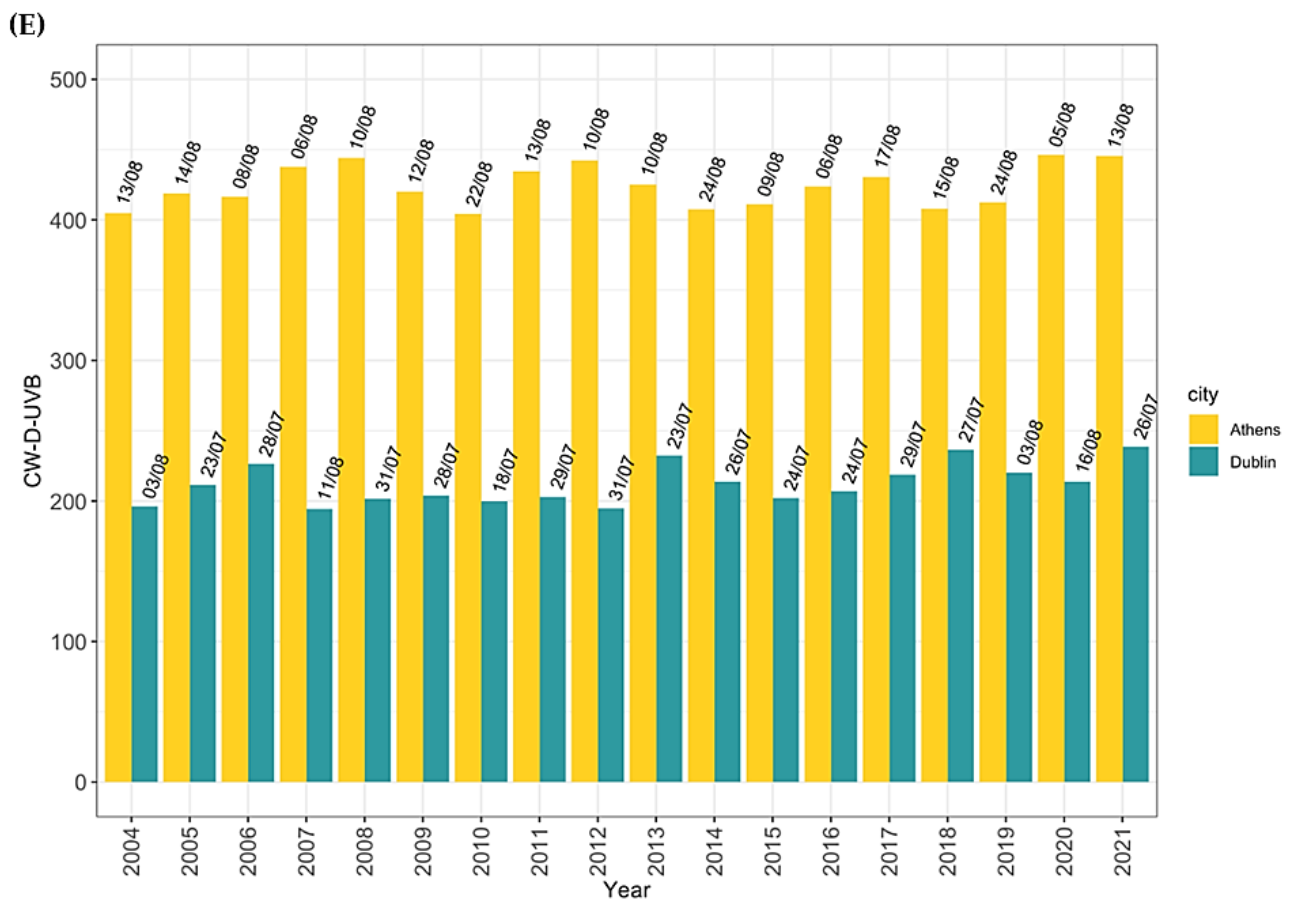


Figure 4. Observed diurnal D-UVB (A,C), calculated diurnal CW-D-UVB (B,D) and the highest CW-D-UVB reached for each year (including the date of the peak, (E)), in Dublin and Athens.

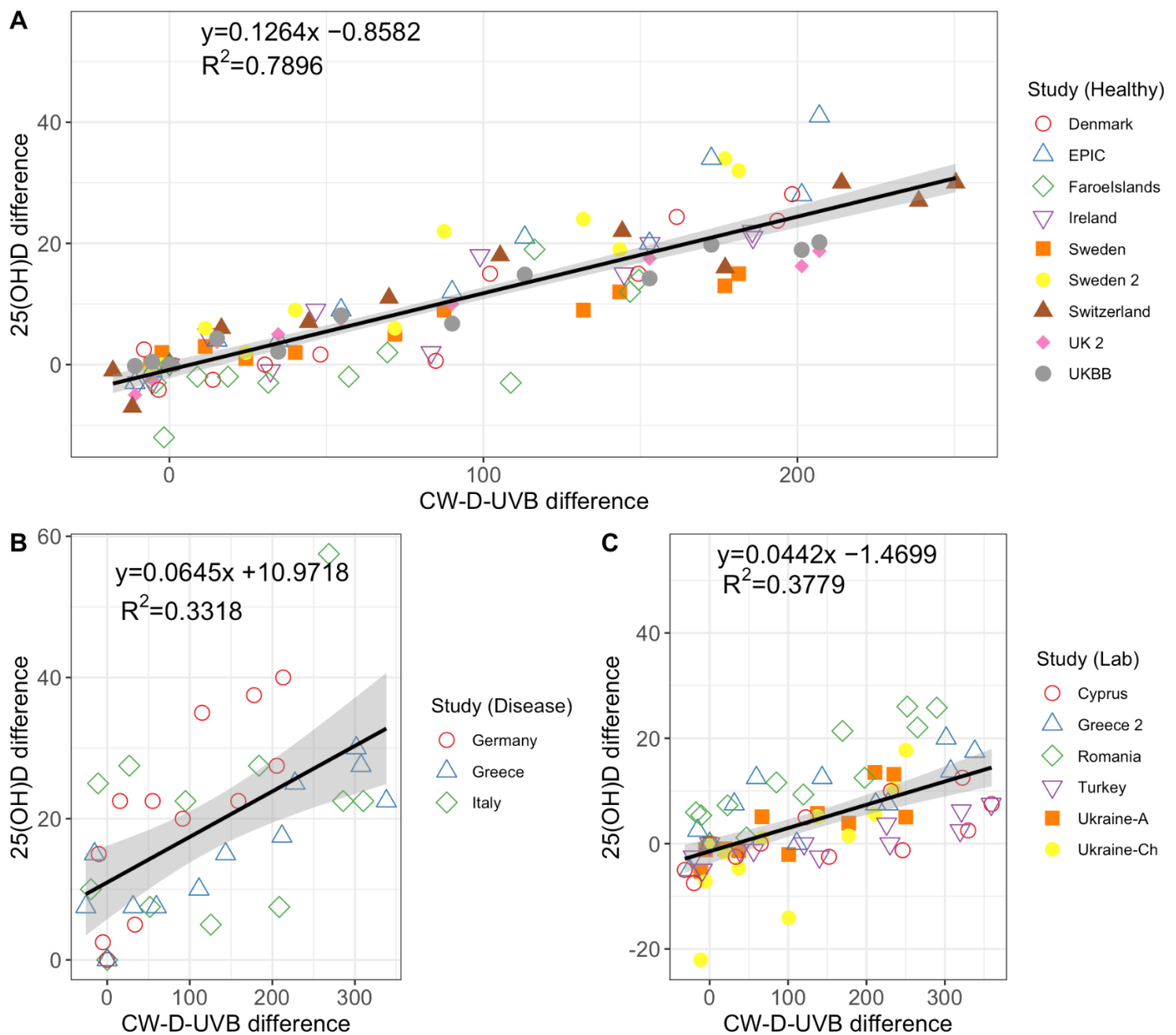


Figure 5. The relationship between the monthly difference in CW-D-UVB (versus March, the reference month) and the monthly difference in 25(OH)D (versus March, the reference month) for retrieved studies. CW-D-UVB data from this manuscript are used and linked with published reports examining 25(OH)D concentration in (A) healthy/population-based cohorts [11,17,20,21,23–26], (B) disease cohorts [18,19,22] or (C) laboratory samples/database [27–30]. Included studies are briefly described in Table S2. **Footnote:** While Faroe Islands are Danish territory, due to the geographical location monthly CW-D-UVB differences were calculated using the Reykjavik and Oslo data (average between the two). One-third of the participants in the EPIC study had fractures, but the remainder are healthy controls, so study was included under population-based studies.

4. Discussion

Despite the moderate latitudinal range in Europe (35–64° N), we observed large regional and seasonal differences in UVB radiation that can induce vitamin D synthesis (D-UVB) across the continent.

As expected, the highest mean daily D-UVB doses were recorded in June/July and the lowest in December/January [11,22,31]. Primarily due to its impact on SZA, latitude was found to be the principal determinant of D-UVB dose, with higher radiation observed at lower latitudes [11,32]. SZA is the angle between the sun and zenith, an imaginary vertical

line drawn perpendicular to the ground [33]. It depends on the latitude, season, and time of the day [33]. At noon, in the summertime, and near the equator SZA is small, and D-UVB is most abundant because the UVB rays travel a lesser distance through the atmosphere and are less likely to get absorbed (in the ozone layer) or scattered by air molecules (Rayleigh scattering). The opposite is true for a large SZA: at dusk or dawn, in winter or at latitudes above 37°, D-UVB is depleted. The reason the differences are larger in summer than in winter is the fact that the D-UVB does not vary linearly with the SZA: the lower the SZA (summer vs. winter), the stronger the increase of D-UVB with decreasing SZA (north vs. south). Of note, eastern cities in Europe with similar latitudes tend to receive higher D-UVB dose compared to their western counterparts, but this is likely due to differences in weather (related to proximity to Atlantic Ocean) and altitude [34]. Thus, it is worth noting that while latitudinal effect might transfer to other regions, longitudinal effect would not.

Median duration of “vitamin D winter” in Europe was 126 days, but the differences were notable and varied from only 4 days in Nicosia and 38 days in Valletta to 187 days in Oslo and 215 days in Reykjavik. The **day-to-day** D-UVB dose varied more prominently in the summer when the absolute loss due to cloud cover is the greatest. For the same reason—there being more to lose—the annual oscillation in D-UVB dose was more prominent in regions with more sunlight. We did not observe any trends that would suggest UVB radiation was increasing or decreasing over the observation period, which is in agreement with other work [35].

4.1. Comparison of UVB Radiation Estimates to Previous Work

Our findings are in line with previous reports [11], despite utilizing different methods to estimate vitamin D effective UVB dose and different date range [36,37]. For example, yearly UVB was reported to be 4.8 ± 3.4 kJ/m² in Athens and 2.1 ± 1.9 kJ/m² in Ireland, while we found 4.78 ± 3.30 kJ/m² and 2.08 ± 1.88 kJ/m², respectively [11]. Likewise, the duration of “vitamin D winter” reported by the us and O’Neill et al. [11] are in agreement.

Countless studies have confirmed a clear relationship between UVB exposure and 25OHD increase [38]. Vitamin D has a reasonably long half-life in the body (1 to 2 months) [39], which explains why there is a 2-month lag between peak/trough UVB radiation and peak/trough vitamin D concentration [20]. Normally, vitamin D accumulates while UVB is abundant (summer), and reserves are used when dermal synthesis is poor (winter). To capture seasonal variability in 25(OH)D, we have previously developed a method of calculating cumulative and weighted D-UVB (CW-D-UVB) dose, that takes into account accumulation and diminution. We found CW-D-UVB more strongly correlated with vitamin D status than diurnal UVB at, or around, the time of vitamin D status assessment [7,8]. Interestingly, CW-D-UVB dose has been associated with health outcomes in previous studies [40–42].

CW-D-UVB alone explained 12.4% of the variance in 25(OH)D in a large sample. For context, 138 genetic loci associated with 25(OH)D status explained only 4.2% [40]. When we linked our CW-D-UVB data with monthly 25(OH)D reported in the literature by others, we found a very strong correlation. This is remarkable given that 25(OH)D data came from different populations residing in different countries, and no other adjustments were made. A notable increase in the monthly 25(OH)D difference of 12.64 nmol/L was found with an 100 kJ/m² increase in the monthly CW-D-UVB, which is comparable to 10–20 nmol/L increase in 25(OH)D that we found in an older cohort from Ireland [8]. These findings highlight the value of CW-D-UVB measure for vitamin D studies. Given its strong impact on 25(OH)D, CW-D-UVB can aid in understanding the determinants of vitamin D status, or be used in prediction modelling with a view of developing personalized recommendations.

Of course, for any given level of ambient UVB radiation, factors such as exposed body surface area, sun-seeking behavior, skin pigmentation, and age, strongly impact dermal production and the increase in 25(OH)D concentration following exposure [8,43]. Moreover, the relationship between UVB and vitamin D production is not linear [43]. It is modified by factors such as the exhaustion of precursors (most notably 7-dehydrocholesterol), shift to

production of other metabolites, and degradation [38]. Finally, factors unrelated to dermal synthesis such as vitamin D supplementation, BMI, diet, or baseline 25(OH)D level strongly impact vitamin D status.

Baseline 25(OH)D level was found to be a crucial determinant of the increase in 25(OH)D concentration after irradiation—the lower the baseline, the greater the increase [38]. Therefore, deficient individuals may benefit the most from natural sources, and conversely, the benefit (for vitamin D production) may be negligible in those with already high 25(OH)D concentration, since the benefit from extra solar exposure is modest at baseline levels above 60 nmol/L, and seems to disappear at levels above 160 nmol/L [44]. Increasingly, studies are uncovering additional benefits of moderate exposure to sunshine, and attention is turning to optimizing the pattern and duration of exposure with a view of maximizing benefit and minimizing harm. Here we described differences in the UVB dose according to the region and season, which should be taken into account when determining the right dose of natural sun exposure. Moreover, this work can inform guidelines concerning vitamin D supplementation, especially during the (local) vitamin D winter.

On a separate but very important note, understanding seasonal changes in UVB and vitamin D is also important for interpreting findings from vitamin D randomized controlled trials [45], because seasonal fluctuation can undermine the trial power and drive null-findings [46,47].

4.2. Strengths and Limitations

This is the first study to systematically characterize UVB radiation relevant for vitamin D production and vitamin D status across European continent, significantly extending the number of locations for which data are available. Findings are based on a notably long observation period and include 18 years of measured UVB data (2004–2021). D-UVB measure used in this work has been adjusted for a broad range of factors that affects UVB dose related to vitamin D synthesis. In terms of limitations, we included only one city for each country. The doses observed might not correlate closely with other regions, particularly for countries such as Croatia that spans multiple climates or Norway that covers a wide range of latitudes or stretches into extreme regions. Our data did not take into account the day-to-day variations in air pollution [14], which may affect the UVB dose, especially on extremely polluted days (haze or smog layer).

5. Conclusions

Very large seasonal and regional differences in D-UVB radiation relevant for vitamin D production were observed across Europe. Vitamin D in winter lasted for <2 months at low European latitudes and >7 months at high European latitudes. Monthly differences in cumulative and weighted D-UVB were very strongly correlated with monthly changes in mean 25(OH)D in different populations. The findings reported here have important implications for developing region- and season-appropriate sun exposure and vitamin D supplementation guidelines.

Supplementary Materials: The following supporting information can be downloaded at: <https://www.mdpi.com/article/10.3390/nu14235189/s1>, Figure S1: European countries and their capitals; Figure S2: Mean daily D-UVB in European capital cities for each month of the year; Figure S3: All measured diurnal D-UVB doses (2004–2021) for Dublin and Athens; Table S1: Capital Cities in Europe; Table S2: Summary of the retrieved studies reporting monthly 25(OH)D.

Author Contributions: Conceptualization, L.Z. and J.v.G.; methodology, L.Z. and J.v.G.; formal analysis, T.K., R.S. and M.Z.; investigation, L.Z., T.K., R.S., M.Z., M.v.W. and J.v.G.; resources, M.v.W. and J.v.G.; data curation, T.K., R.S., M.Z., M.v.W. and J.v.G.; writing—original draft preparation, T.K., L.Z. and J.v.G.; writing—review and editing, T.K., R.S., M.Z., J.v.G., M.v.W. and L.Z.; visualization, R.S. and L.Z.; supervision, L.Z.; project administration, L.Z.; funding acquisition, L.Z. and R.S. All authors have read and agreed to the published version of the manuscript.

Funding: R.S. is funded by Science Foundation Ireland through the SFI Centre for Research Training in Genomics Data Science under Grant number 18/CRT/6214 and supported in part by the EU's Horizon 2020 research and innovation programme under the Marie Skłodowska-Curie grant H2020-MSCA-COFUND-2019-945385. M.Z. was supported by Erasmus+ Higher Education Traineeship (2019/2020).

Institutional Review Board Statement: Not applicable.

Informed Consent Statement: Not applicable.

Data Availability Statement: All data used in this paper are publicly available (<https://www.temis.nl/>) (accessed on 17 October 2022). We are happy to provide curated dataset upon request.

Acknowledgments: The authors of this paper would like to thank Fiona O'Sullivan for her previous work that informed and guided present study. We would also like to thank Maedhbh Nic Lochlainn for helping create the map shown in this manuscript.

Conflicts of Interest: The authors declare that they have no conflict of interest.

Abbreviations

TEMIS	Tropospheric Emissions Monitoring Internet Service
25(OH)D	25-hydroxyvitamin D
UVB	Ultraviolet B radiation
D-UVB	UVB radiation that can induce vitamin D synthesis in skin
CW-D-UVB	Cumulative and weighted vitamin D producing UVB

References

- Theodoratou, E.; Tzoulaki, I.; Zgaga, L.; Ioannidis, J.P. Vitamin D and multiple health outcomes: Umbrella review of systematic reviews and meta-analyses of observational studies and randomised trials. *BMJ* **2014**, *348*, g2035. [[CrossRef](#)] [[PubMed](#)]
- Cashman, K.D.; Dowling, K.G.; Skrabakova, Z.; Gonzalez-Gross, M.; Valtuena, J.; De Henauw, S.; Moreno, L.; Damsgaard, C.T.; Michaelsen, K.F.; Molgaard, C.; et al. Vitamin D deficiency in Europe: Pandemic? *Am. J. Clin. Nutr.* **2016**, *103*, 1033–1044. [[CrossRef](#)]
- Neville, J.J.; Palmieri, T.; Young, A.R. Physical Determinants of Vitamin D Photosynthesis: A Review. *JBMR Plus* **2021**, *5*, e10460. [[CrossRef](#)] [[PubMed](#)]
- Holick, M.F. Vitamin D: A millenium perspective. *J. Cell. Biochem.* **2003**, *88*, 296–307. [[CrossRef](#)] [[PubMed](#)]
- Macdonald, H.M. Contributions of sunlight and diet to vitamin D status. *Calcif. Tissue Int.* **2013**, *92*, 163–176. [[CrossRef](#)] [[PubMed](#)]
- Jiang, X.; O'Reilly, P.F.; Aschard, H.; Hsu, Y.-H.; Richards, J.B.; Dupuis, J.; Ingelsson, E.; Karasik, D.; Pilz, S.; Berry, D.; et al. Genome-wide association study in 79,366 European-ancestry individuals informs the genetic architecture of 25-hydroxyvitamin D levels. *Nat. Commun.* **2018**, *9*, 260. [[CrossRef](#)]
- Kelly, D.; Theodoratou, E.; Farrington, S.M.; Fraser, R.; Campbell, H.; Dunlop, M.G.; Zgaga, L. The contributions of adjusted ambient ultraviolet B radiation at place of residence and other determinants to serum 25-hydroxyvitamin D concentrations. *Br. J. Dermatol.* **2016**, *174*, 1068–1078. [[CrossRef](#)]
- O'Sullivan, F.; Laird, E.; Kelly, D.; van Geffen, J.; van Weele, M.; McNulty, H.; Hoey, L.; Healy, M.; McCarroll, K.; Cunningham, C.; et al. Ambient UVB Dose and Sun Enjoyment Are Important Predictors of Vitamin D Status in an Older Population. *J. Nutr.* **2017**, *147*, 858–868. [[CrossRef](#)] [[PubMed](#)]
- O'Sullivan, F.; Raftery, T.; van Weele, M.; van Geffen, J.; McNamara, D.; O'Morain, C.; Mahmud, N.; Kelly, D.; Healy, M.; O'Sullivan, M.; et al. Sunshine is an Important Determinant of Vitamin D Status Even Among High-dose Supplement Users: Secondary Analysis of a Randomized Controlled Trial in Crohn's Disease Patients. *Photochem. Photobiol.* **2019**, *95*, 1060–1067. [[CrossRef](#)]
- Leary, P.F.; Zamfirova, I.; Au, J.; McCracken, W.H. Effect of Latitude on Vitamin D Levels. *J. Am. Osteopath. Assoc.* **2017**, *117*, 433–439. [[CrossRef](#)] [[PubMed](#)]
- O'Neill, C.M.; Kazantzidis, A.; Ryan, M.J.; Barber, N.; Sempos, C.T.; Durazo-Arvizu, R.A.; Jorde, R.; Grimnes, G.; Eiriksdottir, G.; Gudnason, V.; et al. Seasonal Changes in Vitamin D-Effective UVB Availability in Europe and Associations with Population Serum 25-Hydroxyvitamin D. *Nutrients* **2016**, *8*, 533. [[CrossRef](#)] [[PubMed](#)]
- Webb, A.R.; Kline, L.; Holick, M.F. Influence of season and latitude on the cutaneous synthesis of vitamin D3: Exposure to winter sunlight in Boston and Edmonton will not promote vitamin D3 synthesis in human skin. *J. Clin. Endocrinol. Metab.* **1988**, *67*, 373–378. [[CrossRef](#)]
- Keller, A.; Frederiksen, P.; Handel, M.N.; Jacobsen, R.; McGrath, J.J.; Cohen, A.S.; Heitmann, B.L. Environmental and individual predictors of 25-hydroxyvitamin D concentrations in Denmark measured from neonatal dried blood spots: The D-tect study. *Br. J. Nutr.* **2019**, *121*, 567–575. [[CrossRef](#)]

14. Zempila, M.-M.; van Geffen, J.H.; Taylor, M.; Fountoulakis, I.; Meleti, C.; Balis, D. TEMIS UV product validation using NILU-UV ground-based measurements in Thessaloniki, Greece. *Atmos. Chem. Phys.* **2017**, *17*, 7157–7174. [[CrossRef](#)]
15. Bouillon, R.; Eisman, J.; Garabedian, M.; Holick, M.F.; Kleinschmidt, J.; Suda, T.; Terenetskaya, I.; Webb, A.R. *Action Spectrum for the Production of Previtamin D3 in Human Skin*; CIE: Vienna, Austria, 2006.
16. Van Geffen, J.; Van Der A., R.; Van Weele, M.; Allaart, M.; Eskes, H. Surface UV radiation monitoring based on gome and sciamachy. In Proceedings of the 2004 Envisat & ERS Symposium (ESA SP-572), Salzburg, Austria, 6–10 September 2004; Volume 572, pp. 1073–1082.
17. Michaelsson, K.; Wolk, A.; Byberg, L.; Mitchell, A.; Mallmin, H.; Melhus, H. The seasonal importance of serum 25-hydroxyvitamin D for bone mineral density in older women. *J. Intern. Med.* **2017**, *281*, 167–178. [[CrossRef](#)] [[PubMed](#)]
18. Noe, S.; Heldwein, S.; Pascucci, R.; Oldenbüttel, C.; Wiese, C.; Krosigk, A.v.; Jägel-Guedes, E.; Jäger, H.; Wolf, E.; Spinner, C.D. Seasonal variations in vitamin D levels in HIV-infected patients. *HIV AIDS Rev. Int. J. HIV-Relat. Probl.* **2017**, *16*, 50–53. [[CrossRef](#)]
19. Papadakis, G.; Keramidis, I.; Kakava, K.; Pappa, T.; Villiotou, V.; Triantafyllou, E.; Drosou, A.; Tertipi, A.; Kaltzidou, V.; Pappas, A. Seasonal variation of serum vitamin D among Greek female patients with osteoporosis. *In Vivo* **2015**, *29*, 409–413. [[PubMed](#)]
20. Klingberg, E.; Olerod, G.; Konar, J.; Petzold, M.; Hammarsten, O. Seasonal variations in serum 25-hydroxy vitamin D levels in a Swedish cohort. *Endocrine* **2015**, *49*, 800–808. [[CrossRef](#)]
21. Roddam, A.W.; Neale, R.; Appleby, P.; Allen, N.E.; Tipper, S.; Key, T.J. Association between plasma 25-hydroxyvitamin D levels and fracture risk: The EPIC-Oxford study. *Am. J. Epidemiol.* **2007**, *166*, 1327–1336. [[CrossRef](#)]
22. Calgani, A.; Iarlori, M.; Rizi, V.; Pace, G.; Bologna, M.; Vicentini, C.; Angelucci, A. Serum 25(OH)D seasonality in urologic patients from central Italy. *J. Photochem. Photobiol. B* **2016**, *162*, 361–366. [[CrossRef](#)] [[PubMed](#)]
23. Brot, C.; Vestergaard, P.; Kolthoff, N.; Gram, J.; Hermann, A.P.; Sorensen, O.H. Vitamin D status and its adequacy in healthy Danish perimenopausal women: Relationships to dietary intake, sun exposure and serum parathyroid hormone. *Br. J. Nutr.* **2001**, *86* (Suppl. S1), S97–S103. [[CrossRef](#)]
24. Dalgard, C.; Petersen, M.S.; Schmedes, A.V.; Brandslund, I.; Weihe, P.; Grandjean, P. High latitude and marine diet: Vitamin D status in elderly Faroese. *Br. J. Nutr.* **2010**, *104*, 914–918. [[CrossRef](#)] [[PubMed](#)]
25. Webb, A.R.; Kift, R.; Durkin, M.T.; O'Brien, S.J.; Vail, A.; Berry, J.L.; Rhodes, L.E. The role of sunlight exposure in determining the vitamin D status of the U.K. white adult population. *Br. J. Dermatol.* **2010**, *163*, 1050–1055. [[CrossRef](#)]
26. Guessous, I.; Dudler, V.; Glatz, N.; Theler, J.M.; Zoller, O.; Paccaud, F.; Burnier, M.; Bochud, M.; Swiss Survey on Salt Group. Vitamin D levels and associated factors: A population-based study in Switzerland. *Swiss Med. Wkly.* **2012**, *142*, w13719. [[CrossRef](#)]
27. Niculescu, D.A.; Capatina, C.A.M.; Dusceac, R.; Caragheorgheopol, A.; Ghemigian, A.; Poiana, C. Seasonal variation of serum vitamin D levels in Romania. *Arch. Osteoporos.* **2017**, *12*, 113. [[CrossRef](#)]
28. Shchubelka, K. Vitamin D status in adults and children in Transcarpathia, Ukraine in 2019. *BMC Nutr.* **2020**, *6*, 48. [[CrossRef](#)] [[PubMed](#)]
29. Solak, I.; Cihan, F.G.; Mercan, S.; Kethuda, T.; Eryilmaz, M.A. Evaluation of 25-Hydroxyvitamin D Levels in Central Anatolia, Turkey. *Biomed. Res. Int.* **2018**, *2018*, 4076548. [[CrossRef](#)]
30. Xyda, S.E.; Kotsa, K.; Doumas, A.; Papanastasiou, E.; Garyfallos, A.A.; Samoutis, G. Could the Majority of the Greek and Cypriot Population Be Vitamin D Deficient? *Nutrients* **2022**, *14*, 3778. [[CrossRef](#)] [[PubMed](#)]
31. Jamil, N.A.; Yew, M.H.; Noor Hafizah, Y.; Gray, S.R.; Poh, B.K.; Macdonald, H.M. Estimated vitamin D synthesis and dietary vitamin D intake among Asians in two distinct geographical locations (Kuala Lumpur, 3 degrees N v. Aberdeen, 57 degrees N) and climates. *Public Health Nutr.* **2018**, *21*, 3118–3124. [[CrossRef](#)]
32. Kimlin, M.G.; Schallhorn, K.A. Estimations of the human 'vitamin D' UV exposure in the USA. *Photochem. Photobiol. Sci.* **2004**, *3*, 1067–1070. [[CrossRef](#)]
33. Webb, A.R. Who, what, where and when—influences on cutaneous vitamin D synthesis. *Prog. Biophys. Mol. Biol.* **2006**, *92*, 17–25. [[CrossRef](#)]
34. Fioletov, V.E.; McArthur, L.J.; Mathews, T.W.; Marrett, L. Estimated ultraviolet exposure levels for a sufficient vitamin D status in North America. *J. Photochem. Photobiol. B* **2010**, *100*, 57–66. [[CrossRef](#)] [[PubMed](#)]
35. Correa, M.P.; Yamamoto, A.L.C.; Moraes, G.R.; Godin-Beekmann, S.; Mahe, E. Changes in the total ozone content over the period 2006 to 2100 and the effects on the erythemal and vitamin D effective UV doses for South America and Antarctica. *Photochem. Photobiol. Sci.* **2019**, *18*, 2931–2941. [[CrossRef](#)] [[PubMed](#)]
36. Kazantzidis, A.; Smedley, A.; Kift, R.; Rimmer, J.; Berry, J.L.; Rhodes, L.E.; Webb, A.R. A modeling approach to determine how much UV radiation is available across the UK and Ireland for health risk and benefit studies. *Photochem. Photobiol. Sci.* **2015**, *14*, 1073–1081. [[CrossRef](#)]
37. Mayer, B.; Kylling, A. Technical note: The libRadtran software package for radiative transfer calculations—Description and examples of use. *Atmos. Chem. Phys.* **2005**, *5*, 1855–1877. [[CrossRef](#)]
38. Jager, N.; Schope, J.; Wagenpfeil, S.; Bocionek, P.; Saternus, R.; Vogt, T.; Reichrath, J. The Impact of UV-dose, Body Surface Area Exposed and Other Factors on Cutaneous Vitamin D Synthesis Measured as Serum 25(OH)D Concentration: Systematic Review and Meta-analysis. *Anticancer Res.* **2018**, *38*, 1165–1171. [[CrossRef](#)] [[PubMed](#)]
39. Jones, G. Pharmacokinetics of vitamin D toxicity. *Am. J. Clin. Nutr.* **2008**, *88*, 582S–586S. [[CrossRef](#)]

40. Li, X.; van Geffen, J.; van Weele, M.; Zhang, X.; He, Y.; Meng, X.; Timofeeva, M.; Campbell, H.; Dunlop, M.; Zgaga, L.; et al. An observational and Mendelian randomisation study on vitamin D and COVID-19 risk in UK Biobank. *Sci. Rep.* **2021**, *11*, 18262. [[CrossRef](#)] [[PubMed](#)]
41. O'Sullivan, F.; van Geffen, J.; van Weele, M.; Zgaga, L. Annual Ambient UVB at Wavelengths that Induce Vitamin D Synthesis is Associated with Reduced Esophageal and Gastric Cancer Risk: A Nested Case-Control Study. *Photochem. Photobiol.* **2018**, *94*, 797–806. [[CrossRef](#)]
42. Scott, J.; Havyarimana, E.; Navarro-Gallinad, A.; White, A.; Wyse, J.; van Geffen, J.; van Weele, M.; Buettner, A.; Wanigasekera, T.; Walsh, C.; et al. The association between ambient UVB dose and ANCA-associated vasculitis relapse and onset. *Arthritis Res. Ther.* **2022**, *24*, 147. [[CrossRef](#)]
43. Grigalavicius, M.; Moan, J.; Dahlback, A.; Juzeniene, A. Vitamin D and ultraviolet phototherapy in Caucasians. *J. Photochem. Photobiol. B* **2015**, *147*, 69–74. [[CrossRef](#)] [[PubMed](#)]
44. Vieth, R. Vitamin D supplementation, 25-hydroxyvitamin D concentrations, and safety. *Am. J. Clin. Nutr.* **1999**, *69*, 842–856. [[CrossRef](#)] [[PubMed](#)]
45. Zgaga, L. Heterogeneity of the Effect of Vitamin D Supplementation in Randomized Controlled Trials on Cancer Prevention. *JAMA Netw. Open* **2020**, *3*, e2027176. [[CrossRef](#)]
46. Wyse, J.; Mangan, R.; Zgaga, L. Power determination in vitamin D randomised control trials and characterising factors affecting it through a novel simulation-based tool. *Sci. Rep.* **2021**, *11*, 10804. [[CrossRef](#)] [[PubMed](#)]
47. Zgaga, L.; Shraim, R.; Bolger, E.; Wyse, J. Statistical power in vitamin D randomized control trials investigating biomarkers as continuous outcomes. *J. Steroid Biochem. Mol. Biol.* **2022**, *222*, 106148. [[CrossRef](#)] [[PubMed](#)]